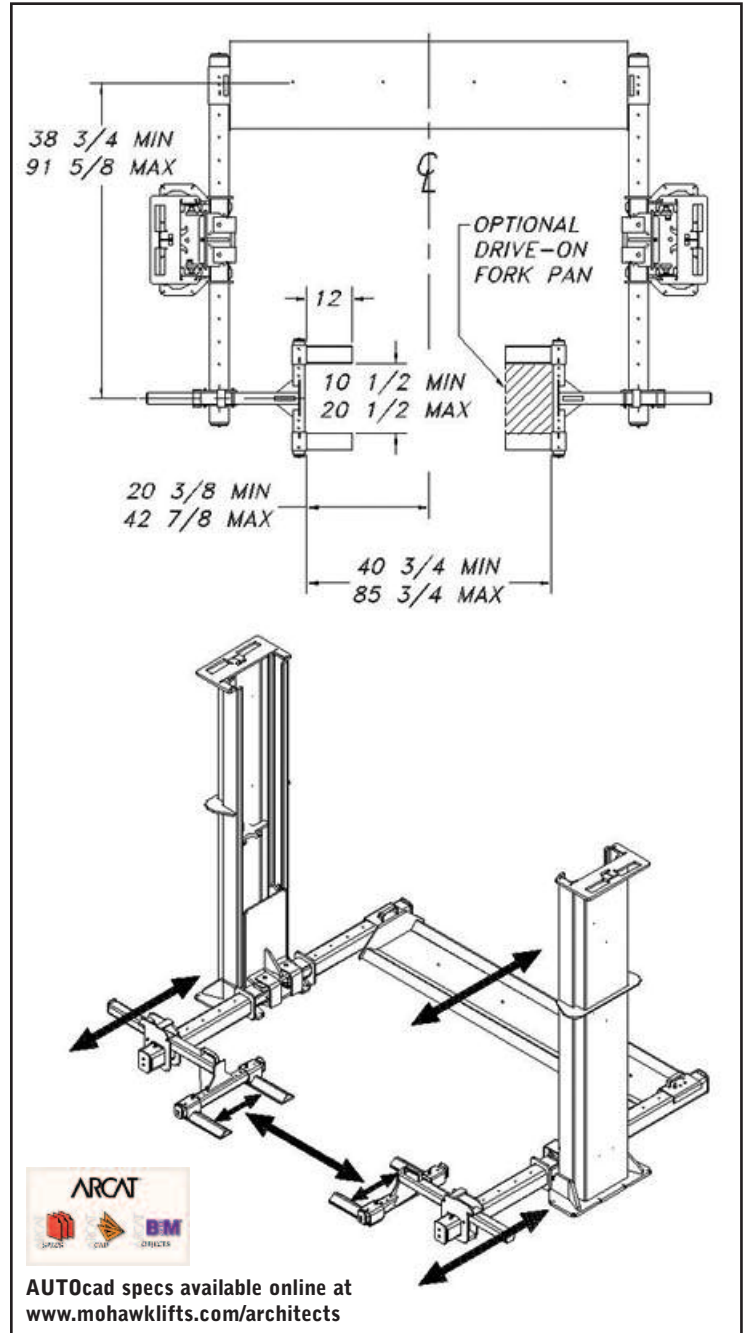


# 7,000 LB. CAPACITY FULL SERVICE MAINTENANCE LIFT

- Capacity ..... 7000 lbs. (3175.2Kg)
- Lifting Speed ..... 45 seconds
- Motor Rating ..... 2.5 HP/208-230 VAC, single- phase  
(3 phase optional)
- Synchronization ..... Hydraulic fluid displacement using no  
chains, cables, or overhead  
obstructions
- Overall Width ..... 11'10 3/8" (3.61m)
- Width Between Posts ..... 10' (3.0m)
- Column Height ..... 8'7 1/8" (2.62m)
- Overall Hydraulic Line Height ..... 12' (3.66m) Standard (adjustable  
to accommodate any ceiling height or  
routed in floor)
- Weight ..... 2900 lbs. (907.2 Kg)
- Concrete Floor Requirements ..... 4000 PSI (27586.2 kPa) mix 4-1/2"  
(11.43 cm) depth
- Anchoring System ..... (14) 3/4" x 5" (1.90 x 12.7 cm)  
Wej-it bolts
- Mechanical Safety Locks ..... Automatic; all position; starting at  
3" (7.62 cm) off the floor
- Hydraulic Safety Systems ..... Automatic; all position
- Cylinders ..... 2 (1 per column)
- Drive System ..... #646 leaf chain routed over cylinders
- Steel Carriage Bearings ..... 8 per carriage, double-sealed, self  
lubricating (16 total)
- Floor Access Between Posts ..... Clear and unobstructed
- Warranty ..... **25 years structural, 10 year  
mechanical, plus limited lifetime  
cylinder warranty**



AVAILABLE UNDER DISCOUNTED  
GOVERNMENT CONTRACT IN ALL 50 STATES



Mohawk Resources, LTD.  
P.O. Box 110  
65 Vrooman Ave  
Amsterdam, NY 12010  
(800) 833-2006  
(518) 842-1431  
FAX: (518) 842-1289  
**www.mohawklifts.com**



**DISTRIBUTED BY:**